

# SE-G5.3



#### ◆ Safer

Cobalt Free Lithium Iron Phosphate (LFP) Battery: Safety and long lifespan, high efficiency and high power density. Intelligent BMS, providing complete protection.

#### ◆ Reliable

Support high discharge power. IP20, natural cooling, wide temperature range: -20°C to 55°C.

#### ◆ Flexible

Modular design, easy to expand, Max. 64 units in parallel, Max. capacity of 340kWh. Suited to residential and commercial applications for increasing the self-consumption ratio.

#### ◆ Convenient

Battery module auto networking, easy maintenance, support remotely monitoring and upgrade, support USB drive upgrade the firmware.

#### ◆ Eco-Friendly

Use environmental protection materials, the whole module non-toxic, pollution-free.



Stock Code: 605117.SH

Model		SE-G5.3
<b>Main Parameter</b>		
Battery Chemistry	LiFePO <sub>4</sub>	
Capacity (Ah)	104	
Scalability	Max. 64 pcs pack (340kWh) in parallel (Max. 32 pcs no external setup)	
Nominal Voltage (V)	51.2	
Operating Voltage(V)	43.2~57.6	
Energy (kWh)	5.32	
Usable Energy (kWh) <sup>[1]</sup>	4.79	
Charge/Discharge Current (A)	Recommend <sup>[2]</sup>	50
	Max. <sup>[2]</sup>	100
	Peak	150 (2mins,25°C)
<b>Other Parameter</b>		
Recommend Depth of Discharge	90%	
Dimension (W/H/D, mm)	440*133*560	
Weight Approximate(kg)	44	
Master LED Indicator	5LED(SOC:20%~SOC100%), 3LED (working, alarming, protecting)	
IP Rating of Enclosure	IP20	
Operating Temperature	Charge:0~55°C (Optional heating) / Discharge:-20°C~55°C	
Storage Temperature	0°C~35°C	
Humidity	5%~95%	
Altitude	≤2000m	
Cycle Life	≥6000(25°C±2°C, 0.3C/0.3C, 90%DOD, 70%EOL)	
Installation	19-inch standard rack (depth ≥600mm / with), Floor-Mounted, Wall-Mounted,	
Communication Port	CAN2.0, RS485	
Warranty Period <sup>[3]</sup>	10 years	
Energy Throughput <sup>[3]</sup>	16MWh@70%EOL	
Certification	CE, IEC62619, UN38.3	

[1] DC Usable Energy, test conditions: 90% DOD, 0.3C charge & discharge at 25°C. System usable energy may vary due to system configuration parameters.

[2] The current is affected by temperature and SOC.

[3] The warranty is due whichever reached first of warranty period or energy throughput.

## Introduction

This series lithium iron phosphate battery is one of new energystorage products developed and produced by Deye, it can be used to support reliable power for various types of equipment and systems.

This series is especially suitable for application scene of high power,limited installation space, restricted load-bearing and long cycle life.

This series battery has built-in BMS ( Battery Management System ), which can manage and monitor cells information including voltage, current and temperature. What's more, BMS can balance cells charging to extend cycle life.

Multiple batteries can connect in parallel for larger capacity and longer power supporting duration requirements.

Model	Accessories Parts Description	Remark
3U-Lrfe-B	Battery Rack Fixed Ears and screws (Included)	Used for battery fixing with 19inch rack or cabinet.
SE-G5.3-BCable	Battery Parallel Cable (Included)	Battery power and communication parallel connection cable, and ground line.
3U-W-Bracket-B	Battery Wall-Mounted Brackets and screws (Included)	Simple wall hanging support.
SE-G5.3-PCable	Hybrid inverter Cable (Included)	Battery power and communication cable connect with hybrid inverter.
3U-Bracket-B	Battery Stack Brackets and screws (Optional)	Simple stacking bracket, 1 unit including 4 pcs brackets, Max. stacking 4 floors.



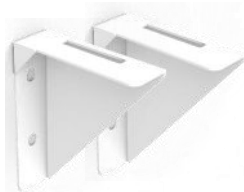
**Model: 3U-Lrfe-B**

**Details:** Pair of rack fixed ears used for battery fixing with 19inch rack or cabinet, included 6 pcs M4 screws, 4 sets of M6 screws and buckle nuts.



**Model: SE-G5.3-BCable**

**Details:** Pair of 270mm 4AWG Power cable (Both ends are M8 copper terminals) and 250mm RJ45 communication cable for battery parallel, and 250mm 10AWG yellow-green ground line.



**Model: Battery Wall-Mounted Brackets**

**Details:** Pair of simple wall hanging support, included 4 sets of M6 expansion screws.



**Model: SE-G5.3-PCable**

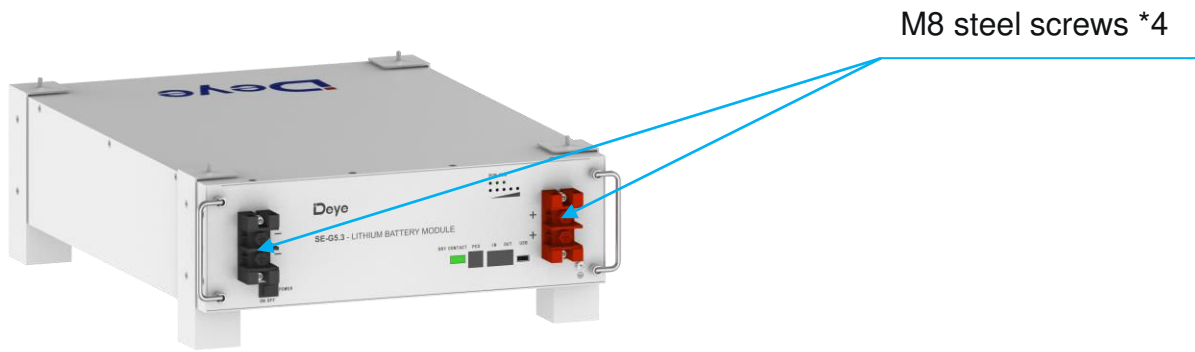
**Details:** Pair of 4AWG battery power cable (Both ends are M8 copper terminals) and RJ45 communication cable connect with hybrid inverter. The cable length can be customized based on customer requirements, default length is 1500mm.



**Model: 3U-Bracket-B**

**Details:** Simple stacking bracket, height 180mm, 1 set including 4 pcs brackets and 8 pcs M4 screws, Max. stacking 4 floors.





## Wall-mounted method

